

PLTS Beasom Hall

An introduction to BEASOM HALL!

Beasom Hall is a 19-person dormitory located at the foot of the PLTS campus. The building, built in the 1950's, consists of 19 dorm rooms, a small workout room, a study lounge, a common area with pool table, TV, piano, and fireplace, a large kitchen, two single unit bathroom facilities, a computer room, and a pay phone. Beasom is located at the edge of Tilden Park and boasts magnificent views of both the Bay and the woods.

ROOMS:

The dorm rooms of Beasom hall are approximately 170 square feet each. Each room comes with a standard twin sized bed, desk, desk chair, desk lamp, lounge chair, dresser, and two large closets with overhead storage space. Odd numbered rooms overlook the bay; even numbered rooms overlook Tilden Park. Each back wall hosts a large window with blinds and a 10-foot built-in bookshelf. Because the rooms are over 50 years old, furniture types and sizes (except for beds and closets) vary. You may bring whatever you require, though remember that space is limited. Some people feel the need to bring their own mini-fridge, microwave, and coffeemaker, although these are available in the kitchen. Feel free to bring your own TV, VCR, DVD player, though there is no option to sign up for cable or satellite. The walls are a standard off-white and cannot be painted. You may nail items into the wall sparingly. An iron and board are available in the common room for dorm use.

KITCHEN:

The kitchen, located in the basement, is great place to host meals with friends. Each student is assigned a refrigerator and freezer storage shelf, a cabinet shelf, and has access to shared kitchen appliances, utensils, and eating space. The kitchen has a standard gas oven and stove, sink with food disposal, microwave, KitchenAid mixer, toaster, blender, bread maker, George Foreman grill, and coffee maker. Students clean the kitchen on a rotating chore schedule, and each person is expected to clean up after themselves, especially since we do not have a dishwasher. Forks, knives, spoons, cups, dishes, pots, pans, and all other conceivable kitchen equipment is available for use, including standard spices and oils.

INTERNET and PHONES:

The dorm is equipped with wireless internet access for its residents' desk and laptops. Two computers are located across from the kitchen in the basement and are internet wired and available for campus use. Each room is equipped with a PHONE jack, though you are responsible for setting up your own phone account if you require phone service. Note that cell phone reception on campus is usually limited, though there is a pay phone and campus phone in the Beasom lobby.

PARKING:

You are welcome to bring your car with you to PLTS and will be assigned a space outside of the dorm by the dorm proctor. PLTS is not liable for lost or stolen items in cars while in our parking lots. Though we are located atop a rather secluded residential neighborhood, we are still in a densely populated area outside of a major city. We recommend taking standard precautions upon parking and leaving your car as you would anywhere else. Remember to update your car insurance, lock the doors when you are away, and hide any visible objects. Berkeley and the Bay Area in general is a headache, so don't be afraid to make use of public transportation and the Looper (our seminarian van that transports students between PLTS, the GTU, and the Delaware Apartments). Refer to the Student Handbook for schedules and further procedures.

WORKOUT ROOM:

We are pleased to announce the opening of a new workout room in Beasom Hall! This new opportunity is located in room 108 and is open to all PLTS students and staff (this includes those living outside of the dorm). The room hosts a treadmill, a TotalGym, dumbbells, mats, medicine balls, an abs machine. The workout room will be open to non-Beasom students from 7am to 10pm. Rules and procedures are distributed at the beginning of each school year.

STUDY LOUNGE:

In addition to a new workout room, we are also pleased to announce a new study lounge in Beasom Hall, equipped with several lounge chairs, desks, and tables, as well as a small reference library! The once-was dorm room is now available for student meetings and study sessions to any PLTS student or staff.

COMMON ROOM:

Hang out with your Beasom dorm-mates in the first floor common room. Watch satellite TV (52"!), play pool, get warm by the fireplace, play darts, or take a nap on one of our leather sofas.

BATHROOMS:

We have new bathrooms!!! Our renovated bathrooms, one on each floor, are made up of five stalls, each with a toilet, sink and shower. An ADA unit is located on the first floor. Bathrooms are assigned in pairs at the beginning of the semester by your dorm proctor.

STORAGE:

Each tenant is allotted a storage shelf approximately 5'x4'. The storage closet is located in the basement and is accessible with your room key.

KEYS:

You will be given a set of keys by the dorm proctor that will grant you access to the main entrance door, fire exit door, your dorm room, and the storage room.

LAUNDRY:

There is a laundry room in Sawyer basement for campus and Beasom occupant use. Each student is allotted shelf space for detergent and may use clothing lines provided in the room. The machines take quarters; though bring your own since we do not have a quarter machine!

DORM PROCTOR:

Unlike normal dorm life, your dorm proctor is not a Resident Assistant (RA)! The Dorm Proctor is responsible for the day-to-day operations of the dorm, supervise the general cleaning and maintenance and the residents' adherence to seminary policies. He or she also assigns weekly chores, parking spaces, keys, and kitchen storage. He/she is your first point of contact for problems relating to dorm life.

COMMUNITY LIVING GUIDELINES:

These general guidelines and community covenant will be distributed by your dorm proctor upon arrival. The dorm proctors will host a dorm meeting at the start of each semester and as needed to review policy and answer questions, and will refer you to the appropriate office to resolve your inquiries.

VISITING HOURS and GUESTS:

Since we are adults and fellow seminarians, we require you bestow common courtesy and manners to your fellow dorm mates. Remember the Golden Rule! Though you may have company at any time, please report guests that plan to stay with you for more than 3 days with your dorm proctor.

PETS:

Strictly no pets, though you may have a fish or two.

RENT:

The rental price for the 2008-2009 academic year, effective from July 1, 2008, is \$2,100 per semester.

All rent is payable through your student account.

Dormitory residents must make a refundable cleaning and security deposit of \$300 which is due at or before the first academic semester of residency.

Beasom in the spring





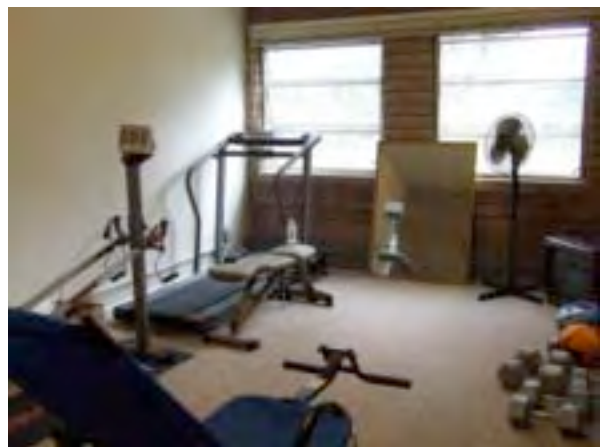
The Dorm Kitchen



The Dorm Study Room



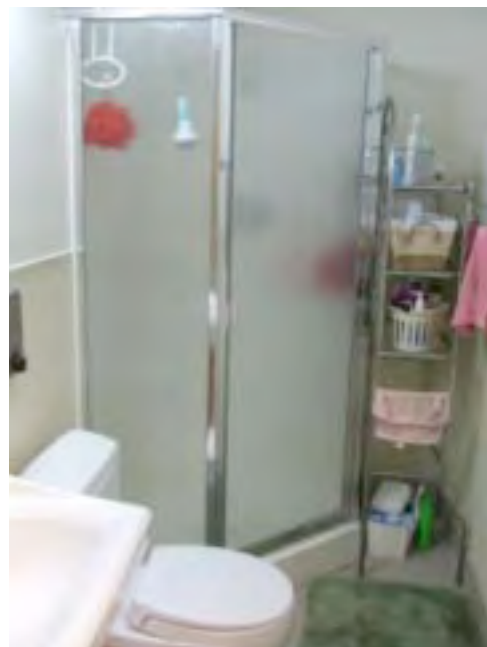
The Dorm Living Room



The Dorm Workout Room



A typical dorm room



A typical dorm bathroom